



Fellowships in History of Art and Visual Culture at The Met

History of Art and Visual Culture Fellowships are offered to individuals working on research projects in fields including, but not limited to, History of Art and Architecture, Anthropology and Archaeology, Linguistics and Philology, English, Linguistics, Religious Studies, and Musicology. Applicants submit a specific, independent research project proposal that uses the Museum's collection and resources.

There are several subcategories included within this fellowship type, including:

- Theodore Rousseau Fellowships, which support 12 months of travel abroad to conduct research related to paintings in European Collections.
- Slifka Foundation Interdisciplinary Fellowships, which combine art historical research with training in the technical investigation of the collections. The 2024-2025 Slifka Fellowship projects are as follow:
 - The Robert Lehman Collection, working in consultation with both curatorial and conservation departments, and based upon individual research interests, the fellow will focus their study on a select number of Florentine and Sienese paintings on view in the galleries. Through close study and examination of individual panels, the fellow will play an essential role in updating scholarship in this area of the collection. More specifically, fellows will produce catalogue entries for The Met's website that will incorporate a range of perspectives and make cross-references to related works (i.e., panels originally belonging to the same altarpieces in other museums and in other departments of The Met). Entries will also include images of altarpiece reconstructions. By publishing these entries online, fellows will contribute to concerted efforts to make this information accessible to a broad public.
 - Bayre Bronzes at the Met: The Department of European Sculpture and Decorative Arts (ESDA), working in collaboration with colleagues in the Departments of Objects Conservation and Scientific Research, seeks a specialist in nineteenth-century French sculpture to participate in a study of bronze sculptures by Antoine-Louis Barye (1795–1875) in The Met collection. Significant aspects of the project for which the Slifka Fellow would be responsible include organizing and participating in a survey of the collection conducted by curators and conservators; updating curatorial object files and entering this information into the Museum's collection database (TMS); conducting primary research in The Met archives; conducting research on Barye's bronze editions and foundry practices; and drafting texts for the object pages published on the Museum's website.
 - More information about the Slifka Fellowships can be found [here](#).

These fellowships are open to PhD candidates, who are working on their PhD at the time they submit their application (junior fellows), and to those who hold a PhD on the date of application and/or are well-established scholars (senior fellows). Additional requirements vary depending on the fellowship.

The fellowship period is September 1 through August 31. All fellows, except Theodore Rousseau Fellows, must be in residence at The Met for the entire fellowship period. Junior fellows receive a stipend of \$47,000. Senior fellows receive a stipend of \$57,000. All fellows also receive an additional \$6,000 for travel.

All applications, including letters of recommendation, must be received by Friday, November 3 at 5:00 p.m. EST / 10:00 p.m. GMT. For more information and to apply, please visit <http://www.metmuseum.org/about-the-met/fellowships>. Questions may be sent to Academic.Programs@metmuseum.org.



Interdisciplinary Fellowships at The Met

This one-year fellowship encourages cross-departmental projects that explore connections between various cultures and collections in the Museum and that go beyond traditional boundaries, bridging the visual arts and other disciplines in the humanities, social sciences, performing arts, and fine arts. Applicants must propose an independent research project that relates to and makes use of the Museum's resources, including its collections, libraries, archives, and programs. Accepted fellows work with one or more supervisors and mentors across department areas and have the opportunity to work closely with other members of the staff and as part of the larger community of fellows at The Met.

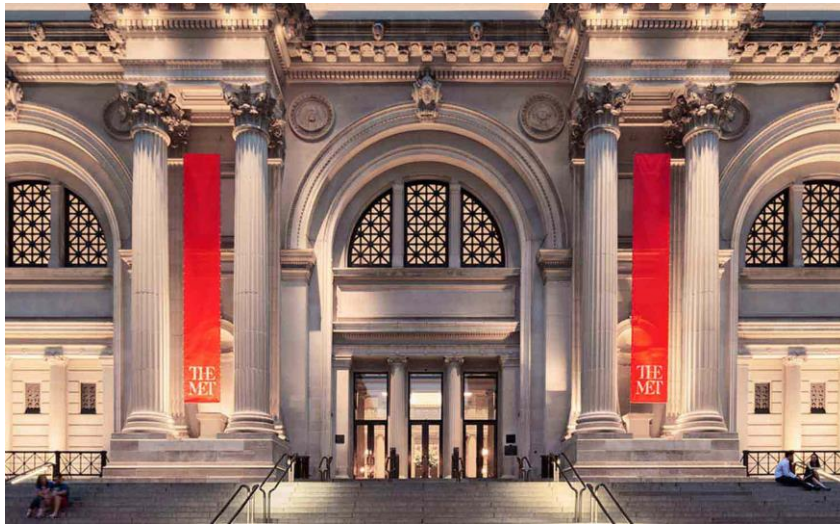
Fellowship applications integrating independent research projects and artistic practice are welcome. However, since the Museum has a separate program for artist residencies, *the Interdisciplinary Fellowship is not intended to culminate in an exhibition, installation, or public program, nor can the Museum provide studio space for fellows.*

The fellowship is open to candidates holding an MA or MFA, or currently pursuing or holding a PhD in any field in the arts, humanities, or social sciences. *We strongly encourage applications from individuals who are members of groups or from disciplines that have been historically underrepresented in the museum field.*

The fellowship period is September 1 through August 31. All fellows must be in residence at The Met for the entire fellowship period. Junior fellows receive a stipend of \$47,000. Senior fellows receive a stipend of \$57,000. All fellows also receive an additional \$6,000 for travel.

All applications, including letters of recommendation, must be received by Friday, November 3 at 5:00 p.m. EST / 10:00 p.m. GMT.

For more information and to apply, please visit <http://www.metmuseum.org/about-the-met/fellowships>. Questions may be sent to Academic.Programs@metmuseum.org.



Andrew W. Mellon Postdoctoral Fellowships at The Met

This two-year fellowship is devoted to a specific Met project and provides curatorial training and an opportunity to engage with a community of scholars from around the world. The fellow is fully integrated into a curatorial department. The individual works directly with one or more curators, who serve as supervisors and mentors throughout the term of the fellowship. The following projects are available for 2024-2026:

- **Department of European Sculpture and Decorative Arts** – to conduct and produce original scholarly and provenance research on the Department of European Sculpture and Decorative Arts' (ESDA) collection
- **Robert Lehman Collection** – to conduct research, compile up-to-date bibliographies, and write short descriptions (web labels) and longer catalogue entries on a selection of Italian paintings in the Robert Lehman Collections of fourteenth- and fifteenth-century Italian paintings.

The fellow also has the opportunity to undertake an independent project in consultation with his or her supervising curator. Through weekly gatherings and discussions, the fellow takes part in research-sharing workshops that expand dialogue and foster a community of intellectual engagement.

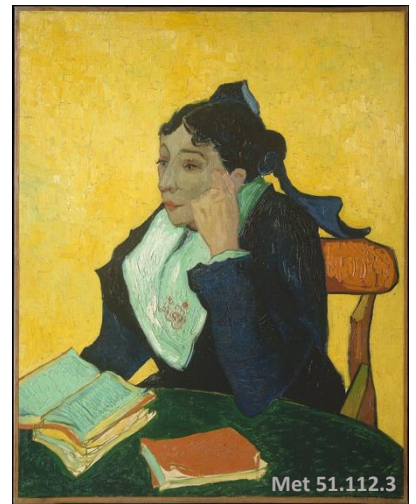
Applicants must hold a doctoral degree (or international equivalent) in art history or archaeology with a specialization related to one of the projects above. The individual must have received the degree within five years of the start date of the fellowship (that is, September 1 of the year following the application deadline).

Fellowships are 24 months in length, beginning on September 1, 2024. All fellowships must take place within this two-year period. Andrew W. Mellon Postdoctoral Curatorial Fellows are temporary full-time exempt employees of The Met and receive an annual salary of \$66,416, fringe benefits, a stipend of up to \$6,000 for research-related travel.

All applications, including letters of recommendation, must be received by Friday, November 3 at 5:00 p.m. EST / 10:00 p.m. GMT.



For more information and to apply, please visit <http://www.metmuseum.org/about-the-met/fellowships>. Questions may be sent to Academic.Programs@metmuseum.org.



Eugene V. Thaw Fellowship for Collections Cataloguing at The Met

Unique among Met fellowships, the purpose of this 12-month position in the Department of European Paintings is to train students and emerging museum professionals in the practice of cataloguing works of art, including researching and compiling provenance information, exhibition histories, and bibliographic references, as well as documenting critical opinions from literature. The position will also provide training in The Museum System (TMS) database that is used throughout the museum world. These skills are central to the mission of all museums to inform and educate scholars and the general public.

The fellow will participate in a range of activities over the 12-month period, typically focusing on a specific portion of the collection, and will work closely with curators, conservators, and cataloguers under the direction of the Senior Collections Cataloguer. In consultation with European Paintings colleagues, the fellow will have opportunities to develop areas of personal interest within the closely linked fields of collections cataloguing and art history. At the discretion of the department head, the fellow may also undertake travel related to research of objects in the European Paintings collection.

Eligible candidates should either have completed their MA or be ABD Ph.D. candidates. A background in cataloguing is helpful but not required. Basic language skills pertaining to the area in which the applicant proposes to work is essential.

The fellowship period is September 1 through August 31. All fellows must be in residence at The Met for the entirety of their 12-month fellowship period. Eugene V. Thaw Fellows are temporary full-time exempt employees of The Met and receive an annual salary of \$47,000, fringe benefits, a stipend of up to \$2,000 for research-related travel.

All applications, including letters of recommendation, must be received by Friday, November 3 at 5:00 p.m. EST / 10:00 p.m. GMT.



For more information and to apply, please visit <http://www.metmuseum.org/about-the-met/fellowships>. Questions may be sent to Academic.Programs@metmuseum.org.

Fellowships in Scientific Research and Conservation at The Met

Conservation Fellowships and Scientific Research Fellowships 2024-2025



There are two types of Conservation and Scientific Research Fellowships: junior and senior. Junior fellows work closely with Met staff to receive training in scientific research and conservation practices. Senior fellows work on a specific research project that makes use of the Museum's collection and/or resources.

Recent master's graduates, PhD candidates, postdoctoral scholars, and senior scientists and researchers are eligible to apply. We encourage applications from those with a background in, but not limited to, conservation, conservation science, chemistry/physical chemistry, botany, and earth sciences/geology.

The fellowship period is September 1 through August 31. All fellows must be in residence at The Met for the entire fellowship period. Junior fellows receive a stipend of \$47,000. Senior fellows receive a stipend of \$57,000. All fellows also receive an additional \$6,000 for travel.

All applications, including letters of recommendation, must be received by Friday, December 1 at 5:00 p.m. EST / 10:00 p.m. GMT.

For more information and to apply, please visit <http://www.metmuseum.org/about-the-met/fellowships>. Questions may be sent to Academic.Programs@metmuseum.org.

Research Scholarship in Photograph Conservation 2024-2026

The Research Scholar in Photograph Conservation works on-site in the Sherman Fairchild Center for Works on Paper and Photograph Conservation. Applicants must propose a research project focused on the Museum's resources and its collections of photographs. Accepted scholars conduct their independent research project and participate in the preservation- and exhibition-related activities of the Photograph Conservation lab.

Applicants should have a graduate degree in conservation or equivalent experience and should be completely committed to the conservation of photographs as his or her area of specialization.

Fellowships are for 24 months, beginning on September 1, 2024. The stipend amount is \$57,000 per year, with an additional \$6,000 for travel.

All applications, including letters of recommendation, must be received by Friday, December 1 at 5:00 p.m. EST / 10:00 p.m. GMT.



For more information and to apply, please visit <http://www.metmuseum.org/about-the-met/fellowships>. Questions may be sent to Academic.Programs@metmuseum.org.



Leonard A. Lauder Fellowships in Modern Art at The Met

Founded in 2013, The Leonard A. Lauder Research Center for Modern Art is a leading center for scholarship on modern art, by which we mean architecture, drawing, design (including exhibition, graphic, interior and stage design) film, painting, performance, photography, and sculpture in the period from the last third of the nineteenth century through to the 1960s, from any country region or culture. Each year, The Met offers three fellowships in the Research Center: a two-year position for a pre-doctoral candidate who is embarking on a dissertation; a post-doctoral fellowship for a qualified scholar at an early career stage, which may be one or two years in duration; and a mid-career fellowship for an established scholar with an appropriate publication record. Fellowships in The Leonard A. Lauder Research Center for Modern Art offer an exceptional opportunity for scholars of modernism to conduct focused research on an independent project, while contributing to the activities and programs of the Research Center. Recent fellowships have supported the work of scholars focused on such topics as Art Brut, Czech Modernism, Dada, Brazilian modern art, interwar European Abstraction, Romanian avant-gardes, Russian Constructivism, and Surrealism, in addition to the agents, dealers, and reception of Cubism. Find out more about the Research Center.

Predocctoral fellowships are for 24 months and must take place between September 1, 2024, and August 31, 2026. Post-doctoral fellowships may be 12 or 24 months in duration and must take place between September 1, 2022, and (depending on the length of the fellowship) August 31, 2024 (depending on the length of the fellowship) August 31, 2025, or August 31, 2026. Mid-Career fellowships are for 12 months and must take place between September 1, 2024, and August 31, 2025. All fellows must be in residence at The Met for the entirety of their fellowship period.

The stipend amount for one year is \$47,000 for predoctoral fellows, \$57,000 for postdoctoral fellows, and \$65,000 for midcareer fellows. During the fellowship period and at the Museum's discretion, Leonard A. Lauder Fellows will be eligible to receive one or more travel stipends.

All applications, including letters of recommendation, must be received by Friday, November 3 at 5:00 p.m. EST / 10:00 p.m. GMT.

For more information and to apply, please visit <http://www.metmuseum.org/fellowships>. Questions may be sent to Laudercenter@metmuseum.org with Academic.Programs@metmuseum.org copied.